

SUBJECT: HTW – BCT Meeting
November 15, 2007
10:00 a.m.

Check (✓)	Name	Organization	Phone	E-mail address
RR	Roman Racca	DTSC	916/255-6407	Rracca@dtsc.ca.gov
	Kate Burger	DTSC	916/255-6537	kburger@dtsc.ca.gov
SP	Stephen Pay	DTSC	916/255-6403	spay@dtsc.ca.gov
	John Chesnutt	U.S. EPA	415/972-3005	Chesnutt.john@epa.gov
✓	Martin Hausladen	U.S. EPA	415/972-3007	Hausladen.martin@epamail.epa.gov
DGH	Grant Himebaugh	RWQCB	805/542-4636	Ghimebaugh@waterboards.ca.gov
WM	Bill Mabey	TechLaw Inc	415/281-8730	bmabey@techlawinc.com
GY	Gail Youngblood	Fort Ord BRAC	831/242-7918	gail.youngblood@us.army.mil
DJL	Derek Lieberman	AHTNA	831/242-4873	Derek.S.Lieberman@us.army.mil
WKC	Bill Collins	Fort Ord BRAC	831/242-7920	William.K.Collins@us.army.mil
	Rob Robinson	Fort Ord BRAC	831/242-7900	clinton.w.robinson@us.army.mil
	George Siller	COE	916/557-7418	George.L.Siller@usace.army.mil

SUBJECT: HTW – BCT Meeting
November 15, 2007
10:00 a.m.

Check (✓)	Name	Organization	Phone	E-mail address
	David Eisen	COE	831/393-9692	David.Eisen@usace.army.mil
	Guy Romine	AED	971/645-3645	Guy.romine1@us.army.mil
	Peter Kelsall	Shaw E & I	831/883-5810 ext. 810	Peter.Kelsall@shawgrp.com
	Eric Schmidt	Shaw E & I	831/883-5809	Eric.Schmidt@shawgrp.com
	Ed Ticken	MACTEC E&C	415/884-3176	ejticken@mactec.com
	Carlene Merey	MACTEC E&C	415/884-3276	cmerey@mactec.com
	Marc Edwards	COE		Marc.A.Edwards@usace.army.mil
	Michael Taraszki	MACTEC E&C	415/884-3325	mdtaraski@mactec.com
	Chuck Holman	Ahtna	916/372-2000	cholman@ahtnagov.com
	Kelly O'Meara	Ahtna	916/372-2000	komeara@ahtnagov.com
	Mike Bombard	HydroGeoLogic	916/614-8770	mbombard@hgl.com
	Don Jones	HydroGeoLogic	916/614-8770	djones@hgl.com
	Roy Evans	HydroGeoLogic	303-984-1167 x5	revans@hgl.com

HTW BCT Meeting

November 15, 2007 at 10:00 a.m.

Item	Action	Comment
OU1 Groundwater Remediation	Status Update	HGL
OU1 Off-Site	Status Update	
OU2 and 2/12 Treatment Systems	Status Update	
Other Groundwater Issues	Status Update	-Annual sampling -Marina Heights/University Villages
Groundwater Treatment System Optimization	Status Update	
OU2 Landfill Gas	Status Update	
OUCTP RI/FS/ROD/Pilot Study	Status Update	
Basewide Range Assessment	Status Update	
Site 39 Eco Risk Work	Status Update	
Site 39 Feasibility Study Addendum	Status Update	
Site 3 Post Remediation Monitoring	Status Update	
FFA Schedule	Status Update	
FOST/FOSET Issues	Status Update	
Calendar Update	Update	

OPERABLE UNIT CARBON TETRACHLORIDE PLUME ENHANCED IN SITU BIOREMEDIATION PILOT STUDY

STATUS – November 15, 2007

FIELD WORK

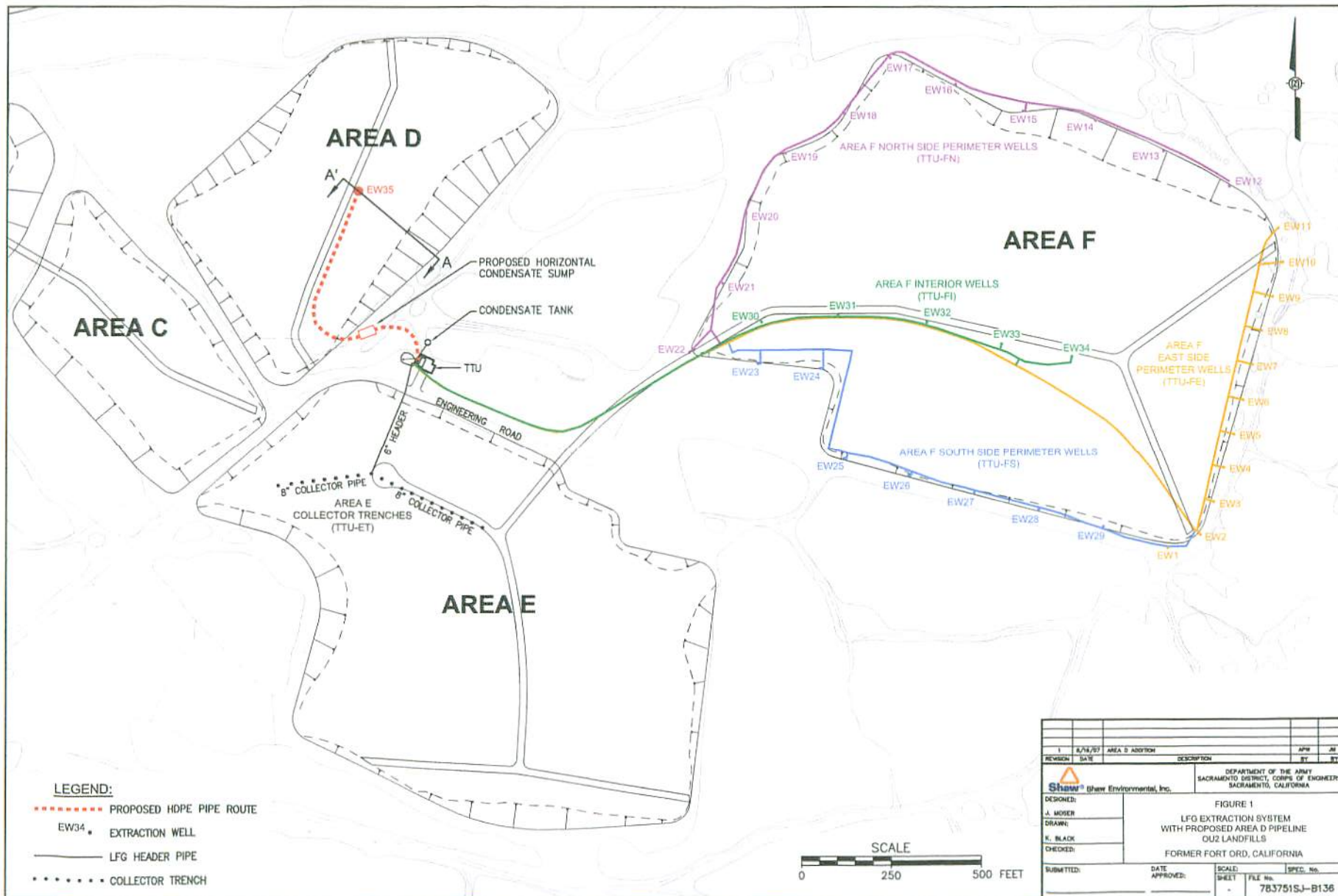
- Well construction complete – July 27
 - 15 extraction wells
 - 7 injection wells
 - 5 monitoring wells
- Well development complete – August 8
- Wells surveyed – August 14
- Slug testing complete – August 17
- System construction in progress
 - substrate processing equipment installation complete – September 15
 - field piping and extraction well tie-ins complete – October 23
 - electrical/system automation complete - October 25
 - system checkout/testing/troubleshooting in progress
- Tracer testing in progress
 - Tracer injected at 3:30 pm on November 14

SCHEDULE

- Startup and tracer testing – October 29 to December 14
- Start substrate injection – December/January

DATA (Preliminary)

- EISB-EW-07 – 10 gpm
- EISB-EW-10 – 15 gpm
- EISB-EW-11 – 15 gpm
- EISB-EW-15 – 15 gpm
- EISB-IW-04 – 55 gpm
- 216 pounds LiBr injected from 3:30 pm through 4:40 pm on Nov 14
- Average injection concentration approximately 6170 mg/L
- Tracer first detected in EISB-MW-03 (approximately 25 feet away from injection well) at 10:15 pm on Nov 14
- Continuing groundwater recirculation and monitoring





LEGEND:

- COMPLIANCE MONITORING PROBE
- PROBE TO BE DECOMMISSIONED
- PROBE/VENT MONITORED WEEKLY AT AREA F FOR COMPLIANCE
- REPLACEMENT PROBE
- LFG MONITORING PROBE
- ▽ UTILITY TRENCH MONITORING
- LFG VENT

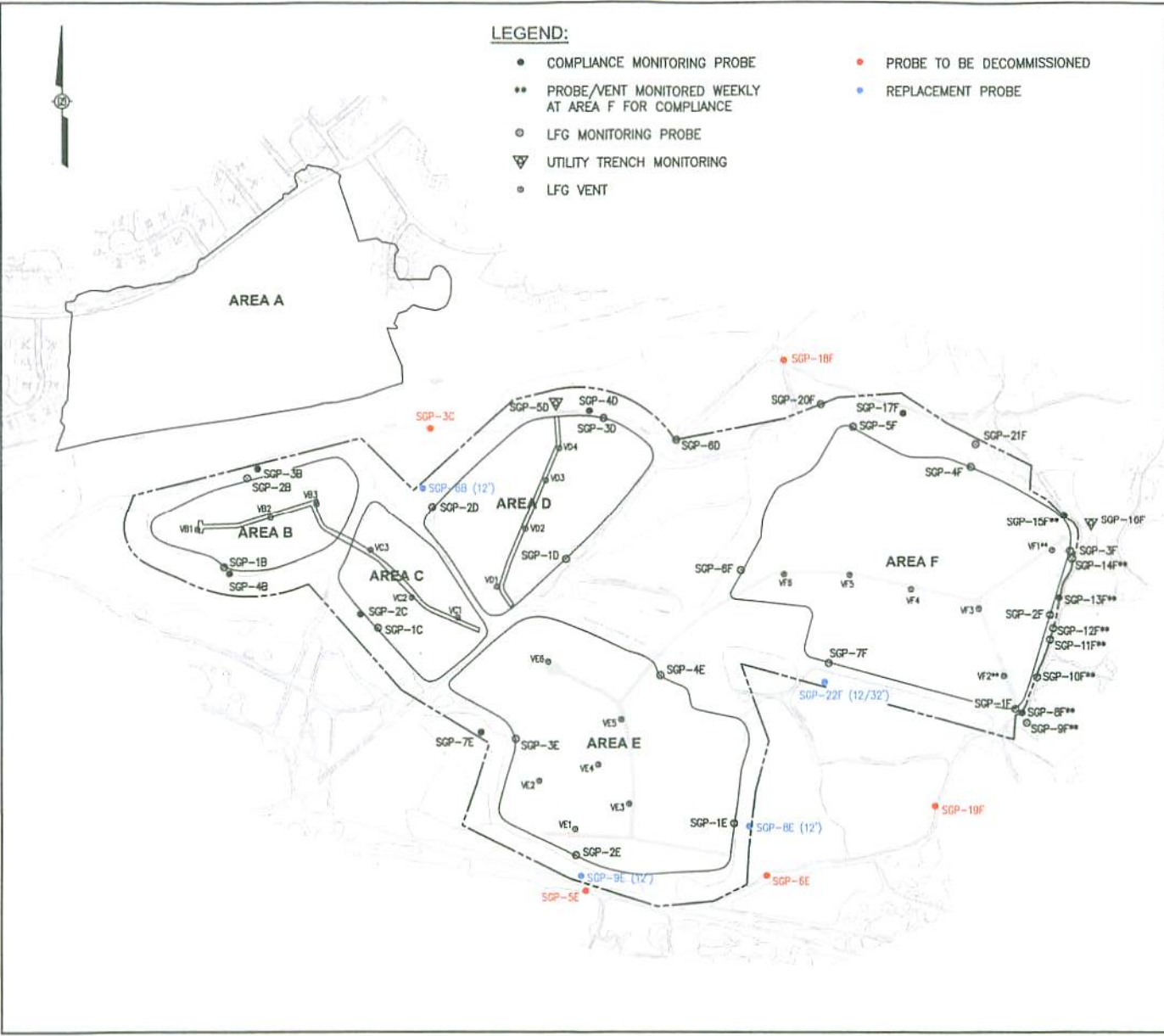
PROBE DEPTH TABLE

PROBE	DIMENSIONS (feet)		PROBE	DIMENSIONS (feet)	
	A	B		A	B
SGP-1B	12	-	SGP-1F	12	22
SGP-2B	12	-	SGP-2F	12	32
SGP-3B	12	-	SGP-3F	12	32
SGP-4B	12	-	SGP-4F	12	32
SGP-5B	12	-	SGP-5F	12	32
SGP-1C	12	-	SGP-6F	12	32
SGP-2C	12	-	SGP-7F	12	32
SGP-1D	12	22	SGP-8F	12	22
SGP-2D	12	22	SGP-9F	22	-
SGP-3D	12	22	SGP-10F	12	22
SGP-4D	12	22	SGP-11F	12	32
SGP-5D	4	-	SGP-12F	32	-
SGP-6D	12	22	SGP-13F	12	32
SGP-1E	12	-	SGP-14F	12	32
SGP-2E	12	-	SGP-15F	12	32
SGP-3E	12	-	SGP-16F	4	-
SGP-4E	12	-	SGP-17F	12	32
SGP-5E	12	-	SGP-18F	12	32
SGP-6E	12	-	SGP-19F	12	22
SGP-7E	12	-	SGP-20F	12	32
			SGP-21F	12	22

* - " IN B DIMENSION COLUMN MEANS SINGLE PROBE

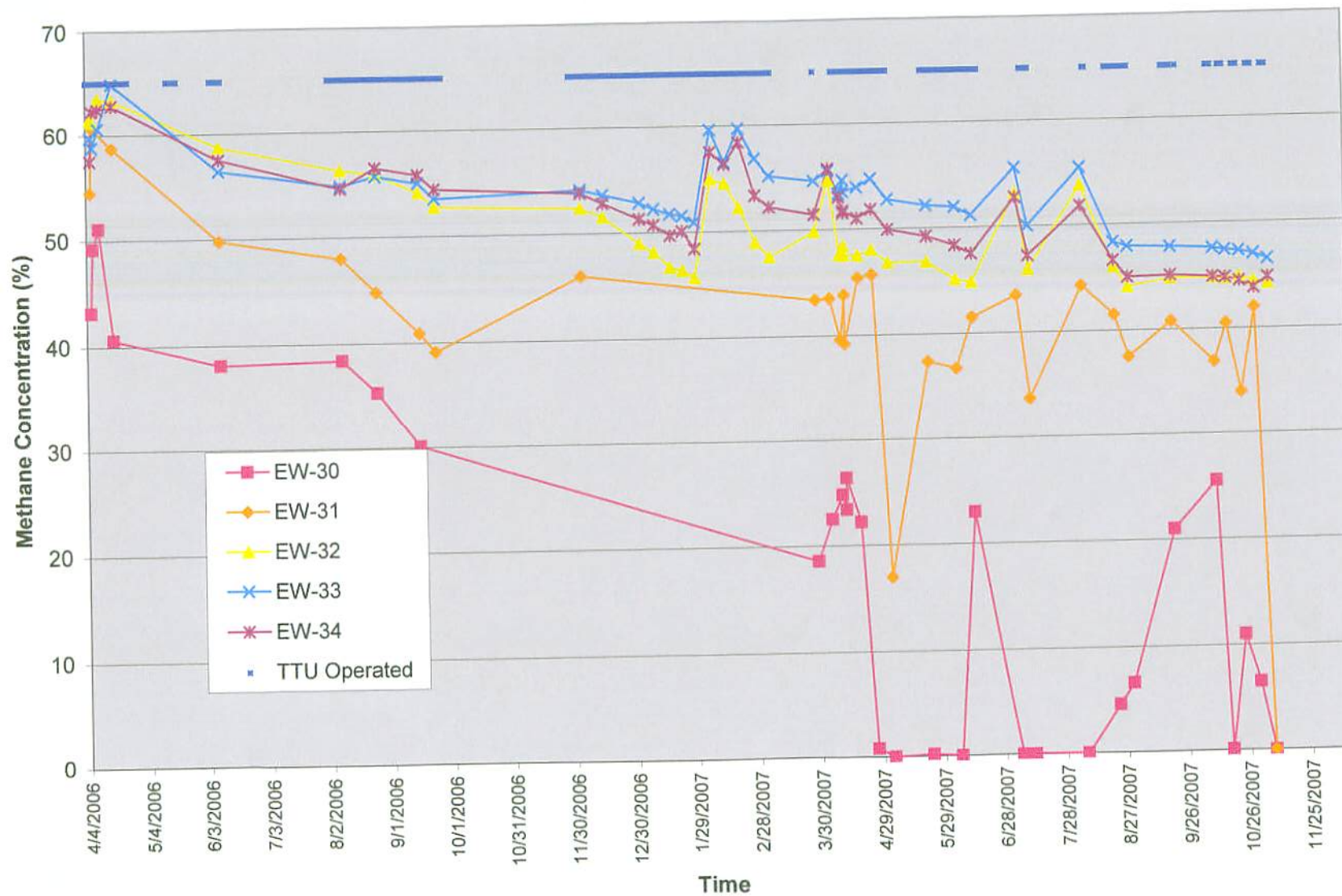
NOTES:

1. QUARTERLY METHANE MONITORING CONDUCTED ON ALL PROBES.
2. ANNUAL VOC MONITORING CONDUCTED ON COMPLIANCE PROBES.

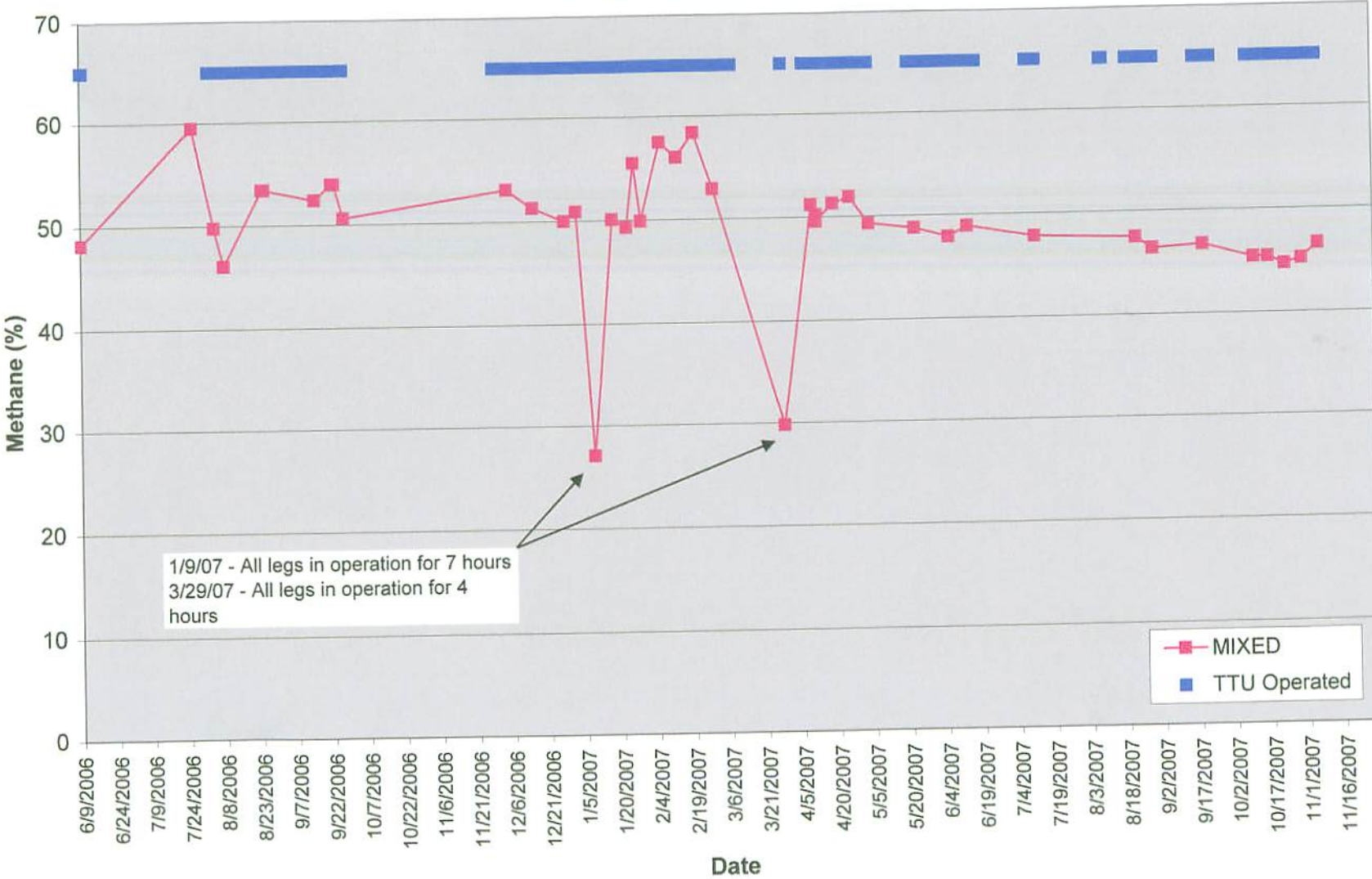


REVISION	DATE	DESCRIPTION	DRG	APP
		DEPARTMENT OF THE ARMY SACRAMENTO DISTRICT CORPS OF ENGINEERS SACRAMENTO, CALIFORNIA		
DESIGNED:	FIGURE 1-3			
DRAWN:	LANDFILL GAS MONITORING LOCATIONS AND SCHEDULE			
CHECKED:	OU2 LANDFILLS, FORMER FORT ORD, CALIFORNIA			
SUBMITTED:	DATE APPROVED:	SCALE:	SHEET:	SPEC. No.
			FILE No.	783751S-J-B139

Methane Concentration vs. Time
Interior Extraction Wells



Methane Concentration vs. Time Mixed Port at TTU



1/9/07 - All legs in operation for 7 hours
 3/29/07 - All legs in operation for 4 hours

—■— MIXED
 ■ TTU Operated

Methane Concentration vs. Time
SGP-13F

