



# Site 39 Inland Ranges Habitat Restoration Status Update

January 11, 2017

---

## Plant Propagation

- Met 2016 plant targets: 8,631 plants
- 2017 plant targets: 6,736 plants

## Planting

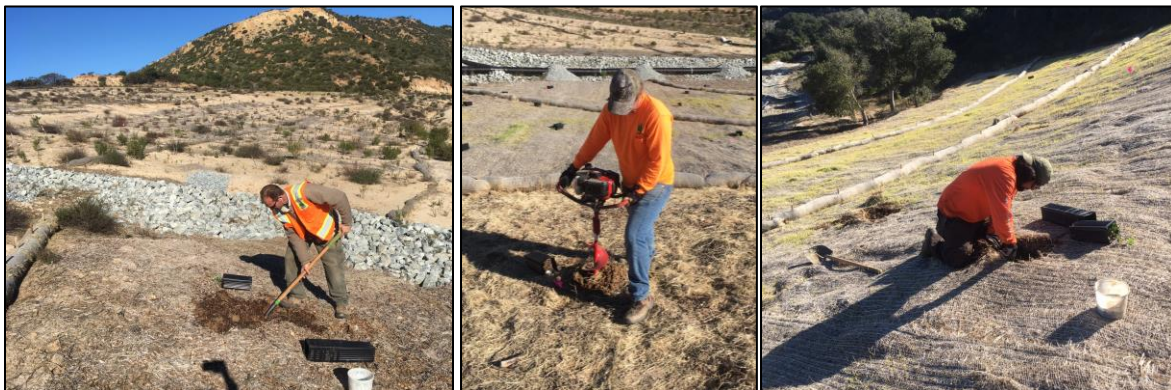
- HA 34: 2.0 acres of area (3,244 plants)
  - Began planting on December 22
  - This planting effort will complete 3 acres of the prescribed 7.5 acres of active restoration
- HA 37: 2.37 acres of area (5,387 plants)
  - This planting effort will complete the prescribed 8.1 acres of active restoration

## Seed Broadcast

- Seeded 4 acres of area at HA 19 with collected seed
  - This effort nearly completes the prescribed 14 acres of passive restoration
    - Monitoring will occur to determine if additional seed is needed
- Seeded 4 acres of area at HAs 27A, 29, 34 and 37 with production seed
  - Seed was broadcast in areas that show little growth from previous restoration efforts

## Erosion Control Repairs

- Completed erosion control repairs HAs 27A, 28, 34 and 37
- Will continue to monitor and maintain active planting areas (15 straw wattles)



Images of planting at HA 34 in December 2016.