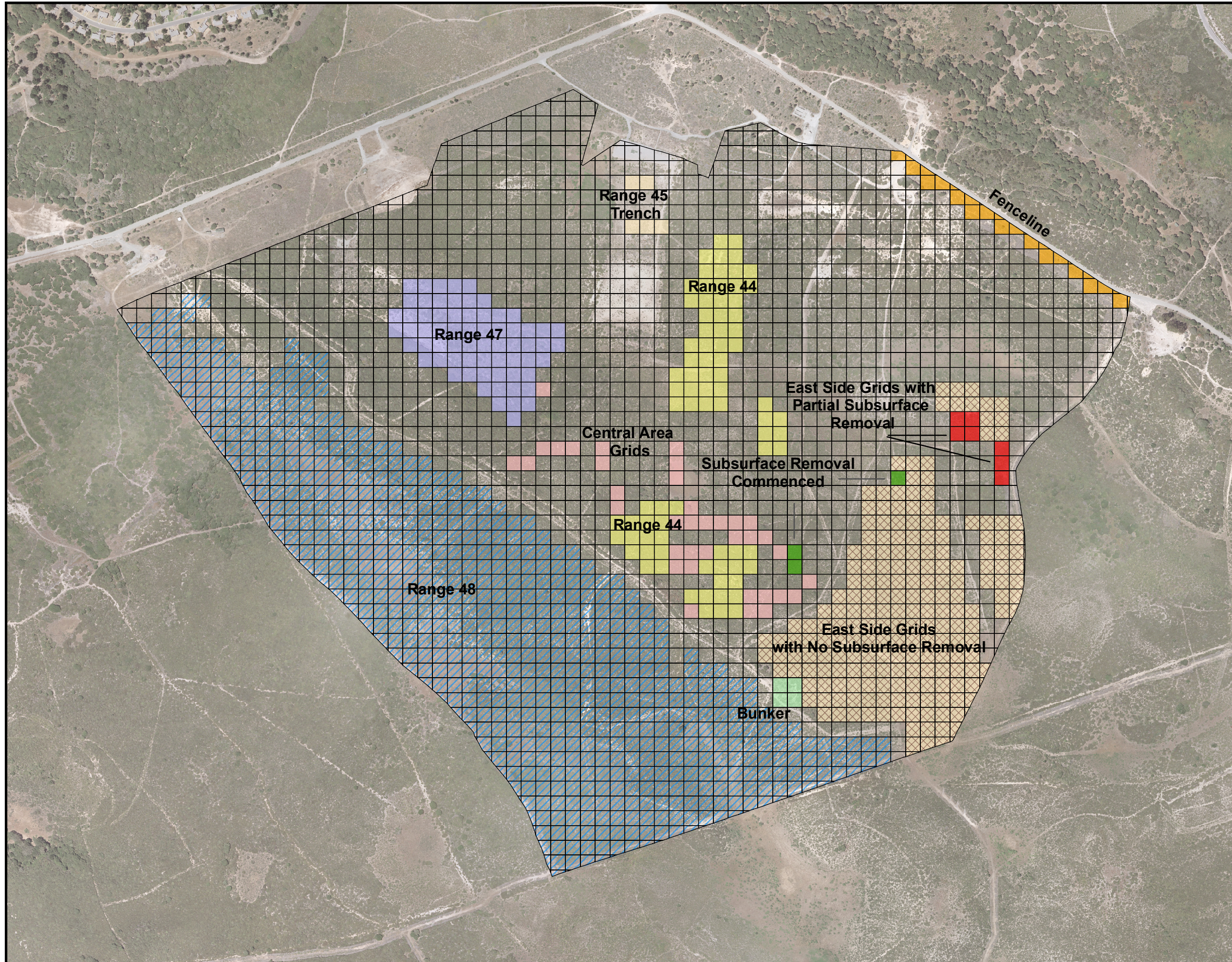


**Map 8-1**  
**MRS-Ranges 43-48**  
**SCAs and Non-Completed Areas**



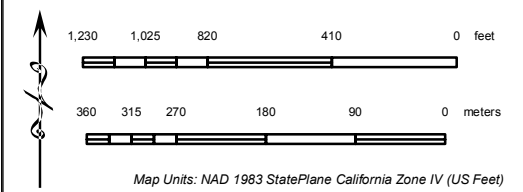
**Non-Completed Areas**

- Subsurface Removal Commenced - 0.69 ac
- East Side No Subsurface - 45.67 ac
- Central Area No Subsurface - 8.49 ac
- East Side - Partial Subsurface - 1.6 ac

**SCAs**

- Bunker - 0.92 ac
- FenceLine - 3.47 ac
- R44 SCA - 18.82 ac
- R45 Trench - 1.15 ac
- R47 SCA - 15.15 ac
- R48 - 138.66 ac
- Grids

SCAs - 178.17 ac  
 Non-Completed Areas - 56.45 ac  
 Total - 234.62 ac



U.S. ARMY CORPS  
OF ENGINEERS



PARSONS

DESIGNED BY: DRJ	<b>FORMER FORT ORD MONTEREY, CALIFORNIA</b>	
DRAWN BY: DRJ		
CHECKED BY: ARH	PRINT DATE: <b>September 22, 2006 at 11:01</b>	CONTRACT: DACA05-00-D-0003
SUBMITTED BY: GWG	AERIAL PHOTOGRAPHY: 2000 1m Resolution Color	SCALE: 1:6,500
FILE:	Fort Ord MMRP Database	
FILE: GIS_Project\Ranges_43_48\Map_8_1_SCA_Pending.mxd		