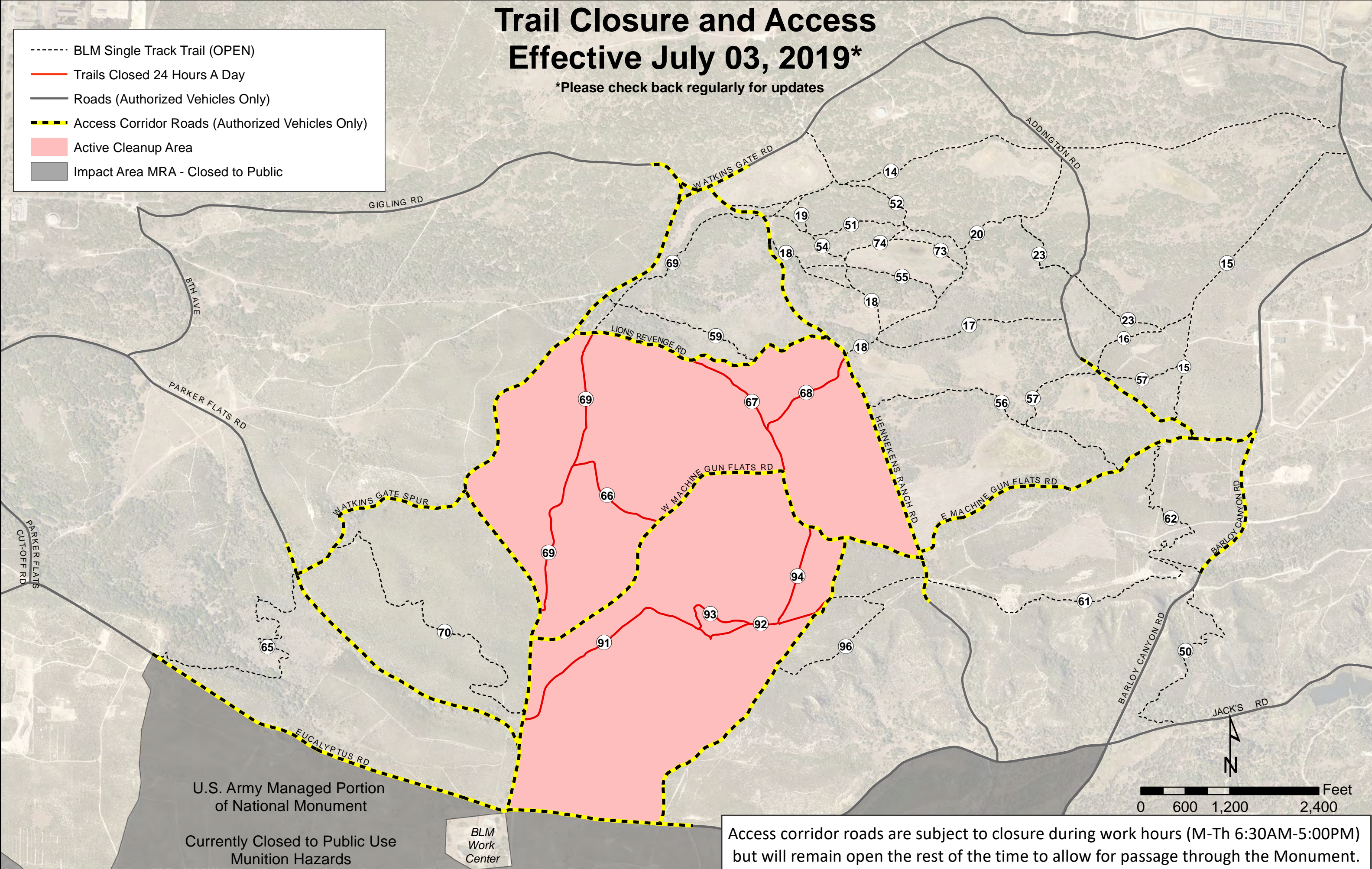


Trail Closure and Access Effective July 03, 2019*

*Please check back regularly for updates

- BLM Single Track Trail (OPEN)
- Trails Closed 24 Hours A Day
- Roads (Authorized Vehicles Only)
- Access Corridor Roads (Authorized Vehicles Only)
- Active Cleanup Area
- Impact Area MRA - Closed to Public



U.S. Army Managed Portion
of National Monument

Currently Closed to Public Use
Munition Hazards

BLM
Work
Center

Access corridor roads are subject to closure during work hours (M-Th 6:30AM-5:00PM) but will remain open the rest of the time to allow for passage through the Monument.