

Site 39 Inland Ranges Habitat Restoration Status Update

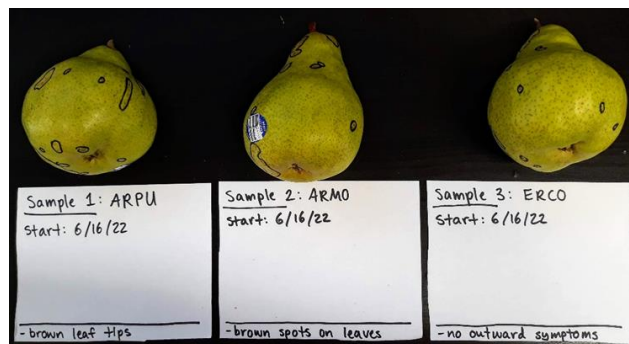
July 22, 2022

Native Plant Nursery and 2022/2023 Plant Targets

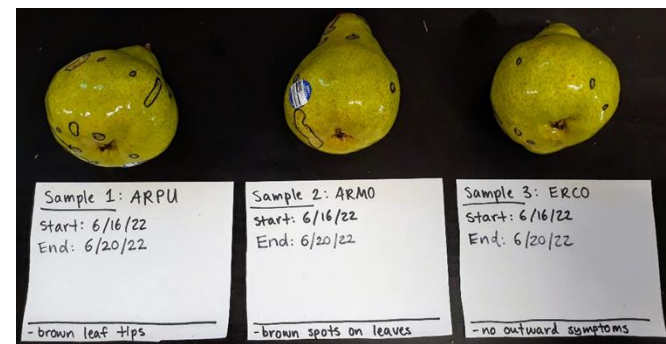
- Continued propagation of 1,621 plants for 2022/2023
 - 100 plants for HA 18 (AMP)
 - 60 plants for HA 22 (AMP)
 - 45 plants for HA 23 (AMP)
 - 20 plants for HA 27 (AMP)
 - 1,296 plants for HA 34 (SSRP)
 - 100 plants for HA 36 (AMP)
- Performed a pair test in June testing for phytophthora
 - Negative results



Selected plants



Before pear test



Results after pear test

Seed Collection

Species	Target (lbs)	Notes
<i>Artemisia californica</i> (California sagebrush)	0.80	fall collection
<i>Baccharis pilularis</i> (coyote brush)	0.16	fall collection
<i>Ceanothus rigidus</i> (Monterey ceanothus) ¹	0.80	completed
<i>Crocanthemum scoparium</i> (peak rush-rose)	0.80	in progress
<i>Diplacus aurantiacus</i> (sticky monkey flower)	0.08	summer collection
<i>Eriophyllum confertiflorum</i> (golden yarrow)	0.24	summer collection
<i>Horkelia cuneata</i> (wedge-leaved horkelia)	1.60	in progress
<i>Lupinus arboreus</i> (yellow bush lupine)	0.80	in progress
<i>Salvia mellifera</i> (black sage)	0.80	summer collection
Total lbs.	6.08	

¹HMP species



Monterey Ceanothus (*Ceanothus rigidus*) seed collection



Monterey Ceanothus seed collection

Monitoring and Data Management

- Completed all spring time monitoring activities
 - photo points
 - HMP annuals surveys
 - Species richness surveys
 - Vegetative cover surveys
 - Installed three new transect at HAs 28, 34, and 37
- Currently working on data entry and data management

Purple needle grass production plot

- The field has been cut and is drying before being processed. The plot performed well and we are anticipating a productive yield (>50 lbs)



Purple needlegrass (*Stipa pulchra*) plot after box cut



Purple needlegrass harvest drying on tarp before processing